

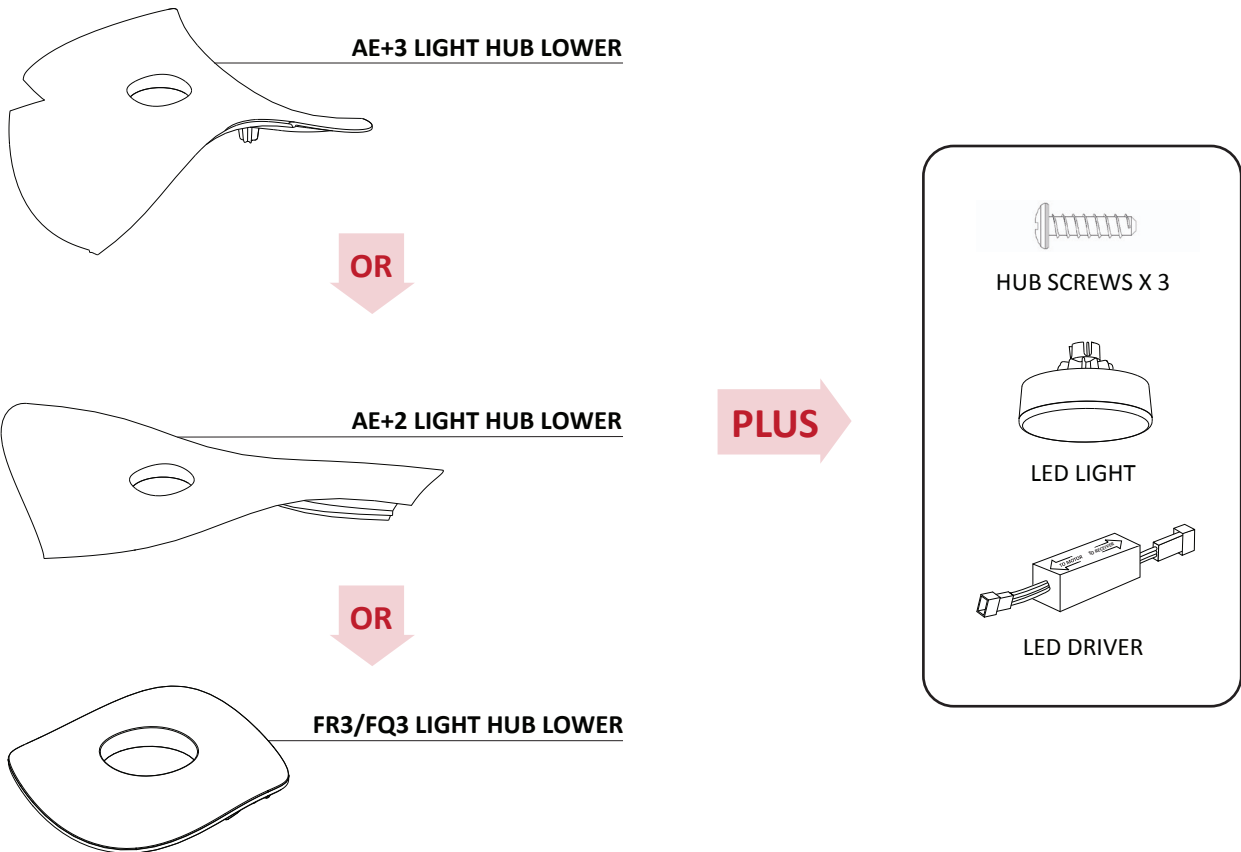
AERATRON

Aeratron LED Light Kit Instruction



IMPORTANT - Use this Light kit Instruction in combination with the Aeratron User Manual by Inserting after **STEP 8** of the User Manual supplied with the Fan.

Unpack your Light Kit and **examine all parts**, you should have the following:



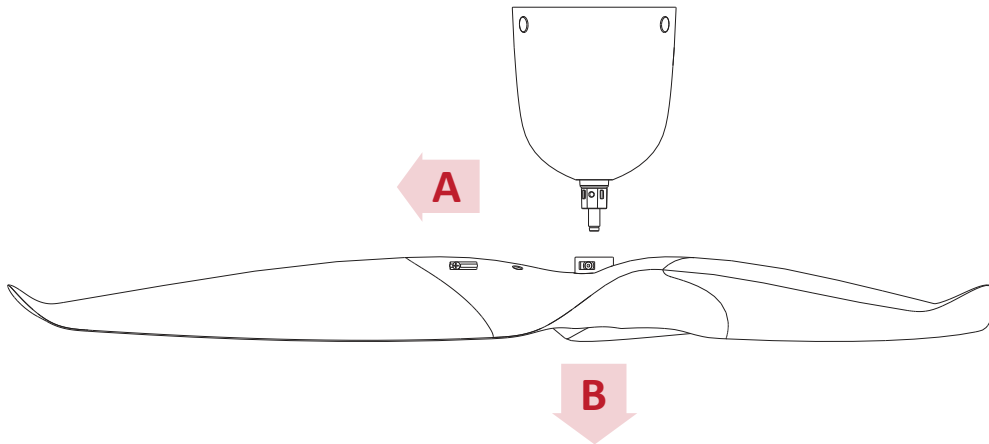
NOTE: A small colour variation between the Fan and the retrofit Light Hub lower Parts is standard manufacturing tolerances and consequently will need to be accepted by the user.



IMPORTANT – Turn off electricity supply at main power box, disconnect power by removing fuse or turning off circuit breaker before commencing to **STEP 1**

STEP 1

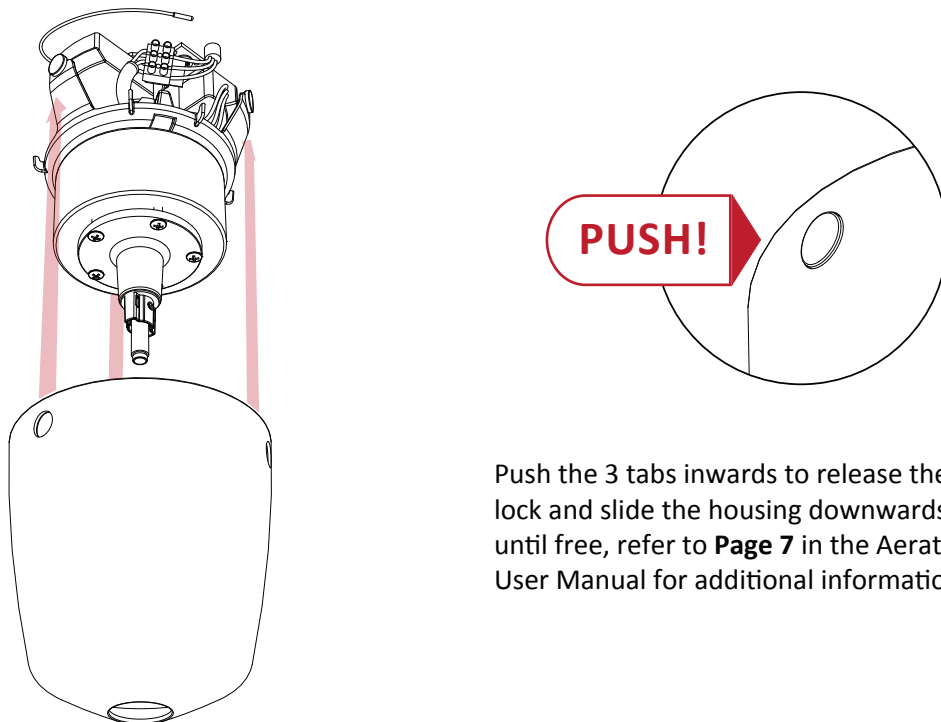
Remove the Fan Blades



- A. Unscrew the Lock Screw, hold/ push up Fan Blades and pull out the Pivot Lock (use pliers if required)
- B. Remove Fan blades / Constantly handle fan with care at all times; refer to **Page 8** in the Aeratron User Manual for additional information.

STEP 2

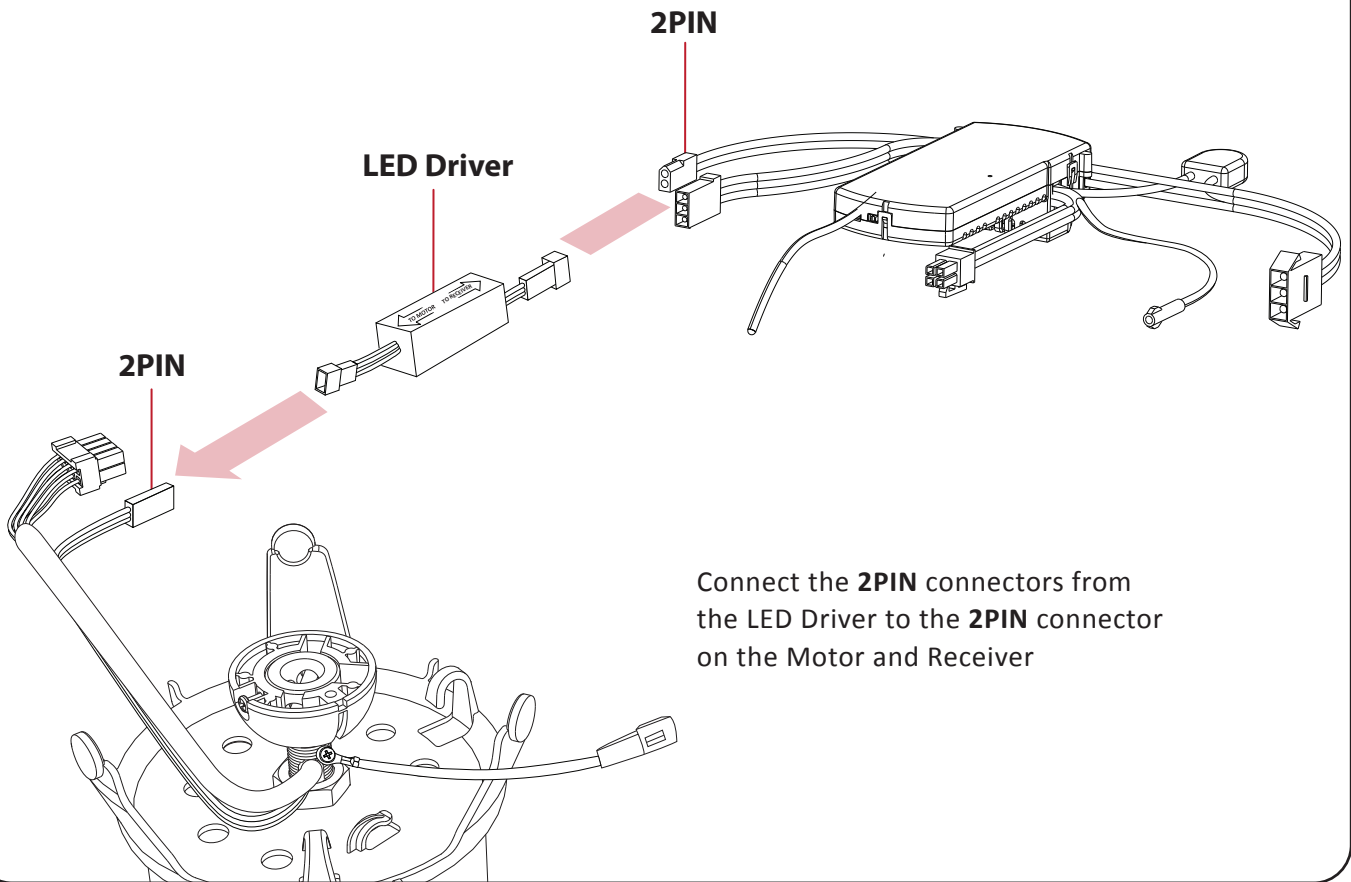
Remove the Fan Motor Housing



Push the 3 tabs inwards to release the lock and slide the housing downwards until free, refer to **Page 7** in the Aeratron User Manual for additional information.

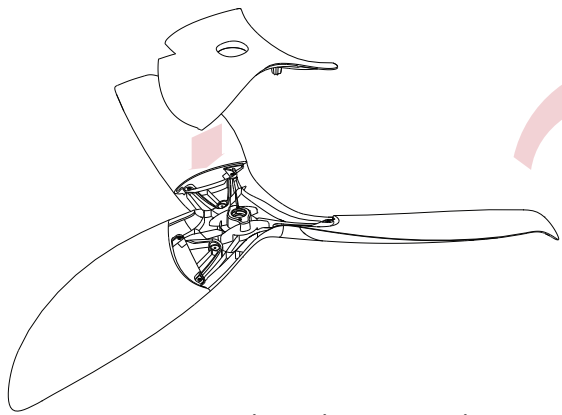
STEP 3

Connect LED Driver to Motor & Receiver

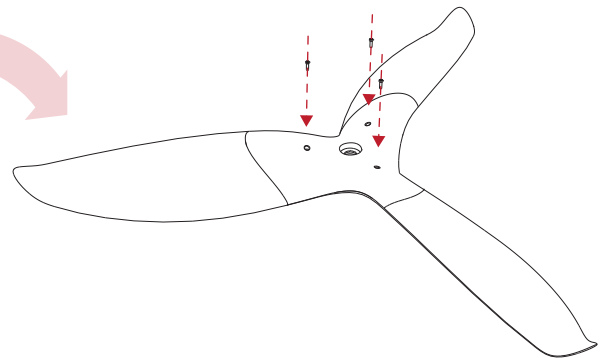


STEP 4

Replace Hub Lower with Light Hub Lower



Remove the Hub Lower and insert the Light Hub Lower into the recess. With care, turn the fan over.

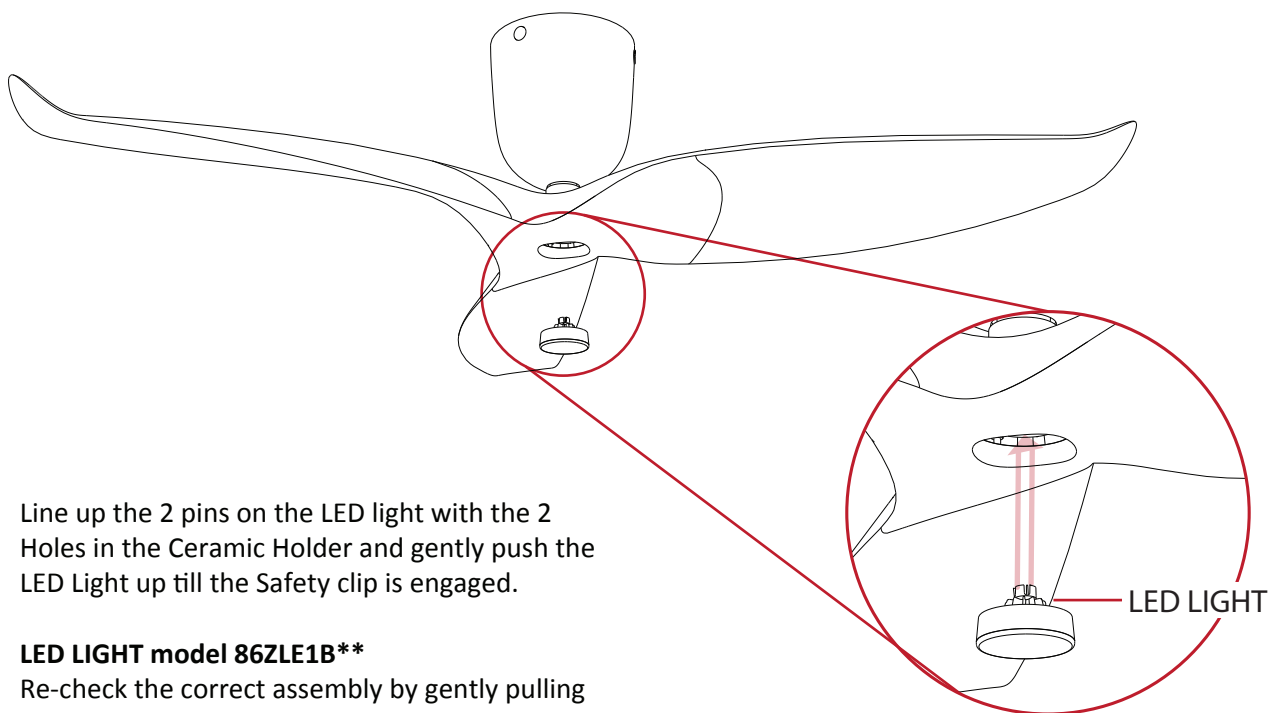


Fasten the Light Hub Lower from the top side using the 3 Hub Screws



IMPORTANT – Re-assembly the Motor Housing and the Fan Blades to the Drive Shaft as per **STEP 2** and **STEP 1** above. No liability is accepted if the Pivot Lock is installed incorrectly.

STEP 5 Insert the LED Light



Line up the 2 pins on the LED light with the 2 Holes in the Ceramic Holder and gently push the LED Light up till the Safety clip is engaged.

LED LIGHT model 86ZLE1B**

Re-check the correct assembly by gently pulling on the Light to make sure the LED is tight.



Note: Use only the Aeratron™ LED light as supplied, **DO NOT** use any other lights! Other lights will not work or damage the fan light circuit and void the Fan Warranty

LED Lights available from Aeratron

Input Voltage (V/AC)	LED Power (AC)	Colour Temp (K)	Luminous Flux (lm)	Light Size
220-240V/AC	10 Watt	3000K (warm white)	800lm	Ø55x27mm
100-120V/AC	10 Watt	3000K (warm white)	800lm	Ø55x27mm

For General Information & Warranty issues refer to the Aeratron™ User Manual available at www.aeratron.io

Thank you. Your Aeratron team.

AERATRON

LED Light Edition 2022/03